

Guidance on **cold wave** ID: 202303-u2

Area concerned: southern France, Andorra, northern and eastern Spain

Initial statement issued on 17 January 2023
First update issued on 20 January 2023
Second update issued on 31 January 2023

Valid:
Begin: 31 January 2023
End: 7 February 2023



To: Climate Watch focal points of NMHS of France, Andorra, Spain

The RA VI RCC Network Offenbach Node on Climate Monitoring (RCC Node-CM) is responsible for providing Climate Watch guidance information for NMHSs' own consideration for issuing climate advisories for their territory.

After having consulted the consortium partners of the RCC Node-CM and RCC Node-LRF (RA VI RCC Network Toulouse and Moscow Node on Long-Range Forecasting), RCC Node-CM issues the following guidance information:

Due to the results from monthly forecasts, we expect:

"Below-normal temperature (cold wave) in parts of Southwestern Europe until latest early next week. Weekly anomalies will be between $-1\text{ }^{\circ}\text{C}$ and $-4\text{ }^{\circ}\text{C}$. Daily minima will be around $0\text{ }^{\circ}\text{C}$ in the lowlands, lower in mountain areas. The probability for below-normal temperature is above 90%. There is an increased risk of frost damage."

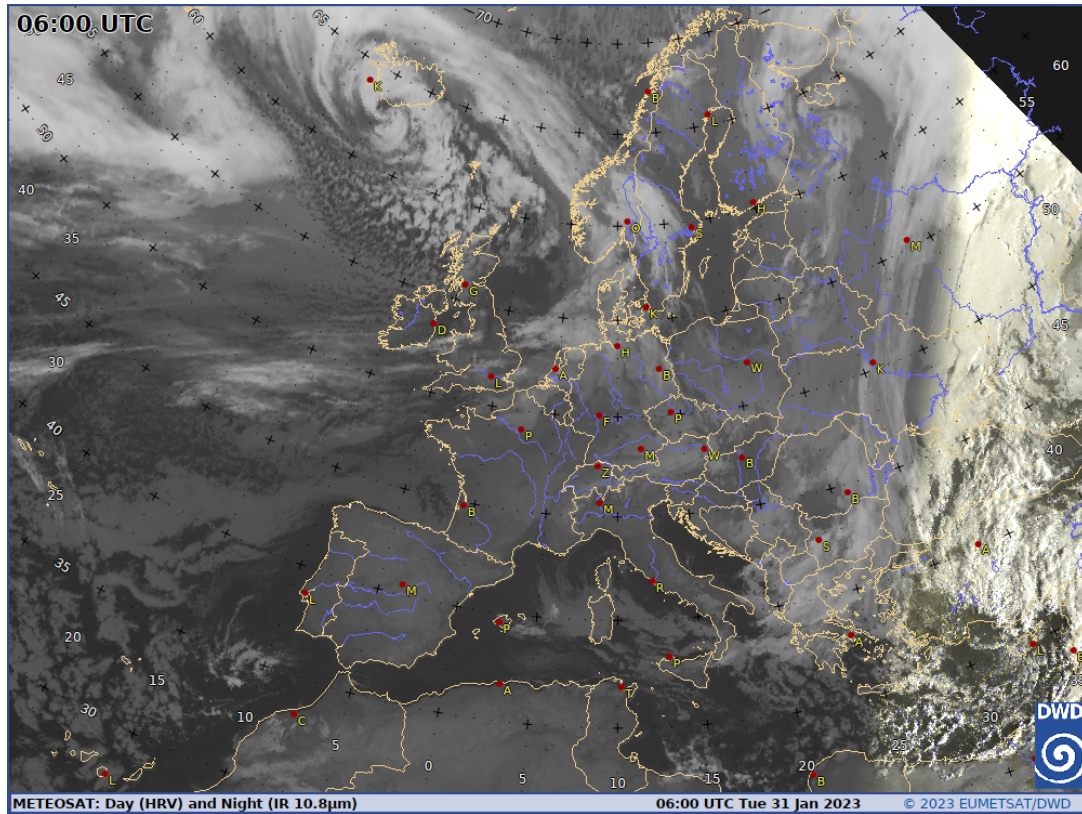
This information should be used as guidance for the National Meteorological and Hydrological Services (NMHS) in a pre-operational mode. It is up to the above-mentioned NMHSs to monitor the status and evolution of the current climate conditions closely and to consider issuing a national Climate Watch Advisory. RCC Node-CM would appreciate feedback from NMHS whether this information was helpful. Also, any suggestion on further pieces of information needed by NMHSs is highly welcomed! A template for a national climate watch advisory can be provided by DWD on request as agreed among the climate watch pilots and RCC Node-CM.

Please note that further information can be obtained from RCC Node-CM website (<https://rcccm.dwd.de>) concerning Climate Monitoring and from RCC Node-LRF websites (<http://seasonal.meteo.fr>, <http://neacc.meteoinfo.ru/forecast>) concerning Long-Range Forecast or by e-mail to rcc.cm@dwd.de or rcc-lrf-mf@meteo.fr. For ECMWF member's further information on monthly forecasts after logging in is provided at <http://www.ecmwf.int/> ->Forecasts

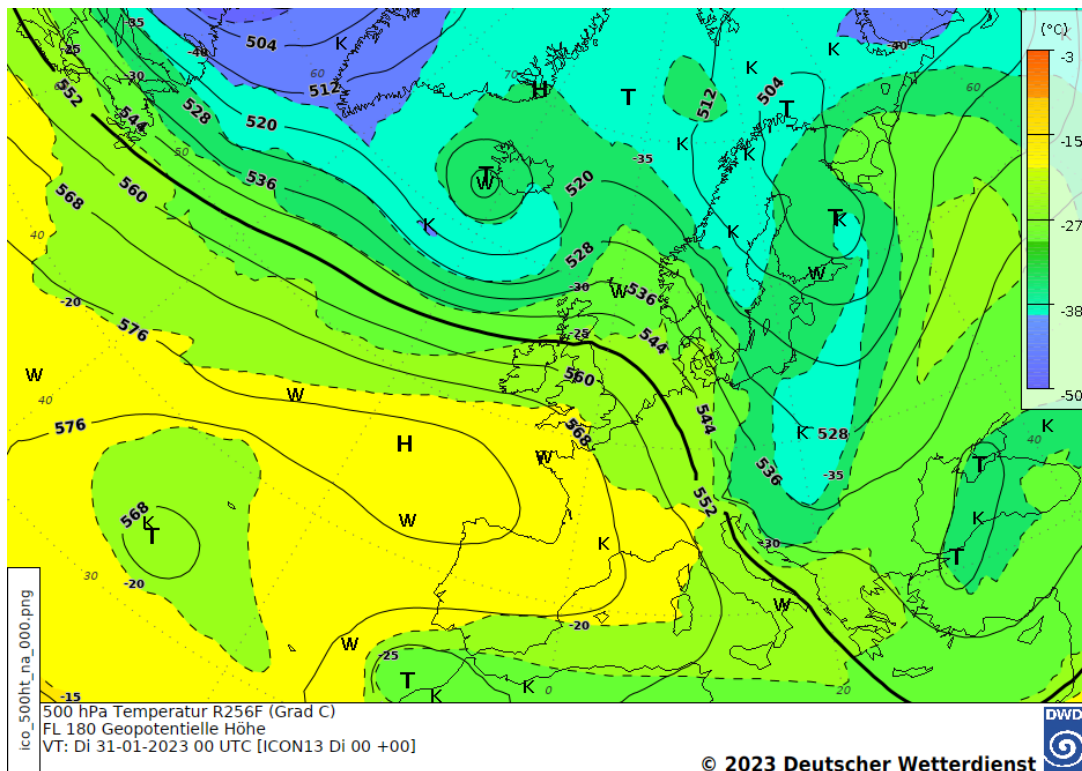
We will monitor the evolution of the anomaly, issue updates if significant change arise and close the advice when no clear signal can be detected in the forecasts.

On behalf of the RCC Node-CM Team

Supplementary material

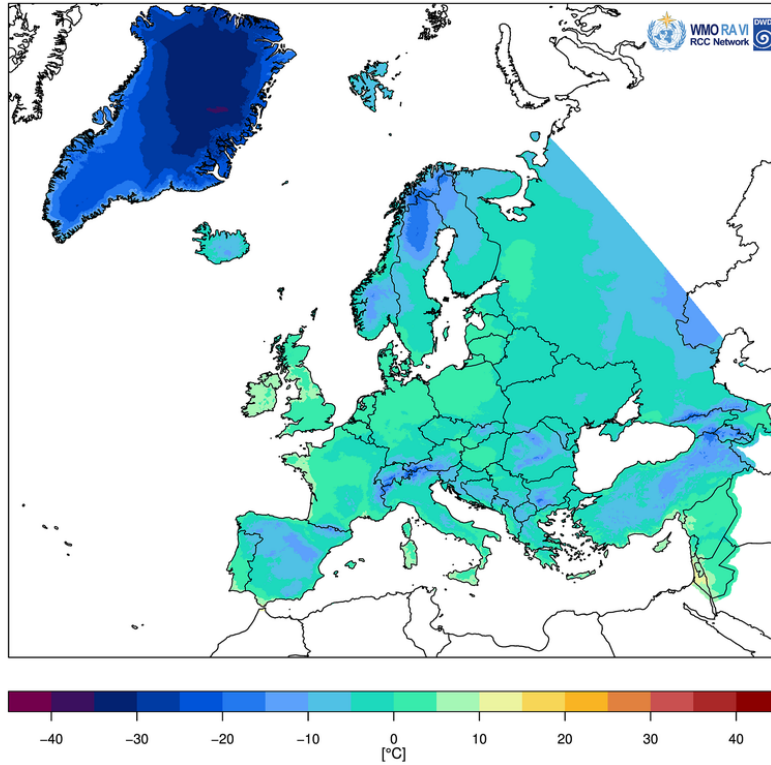


Meteosat satellite image 31 January 2023, 06 UTC. Source: DWD

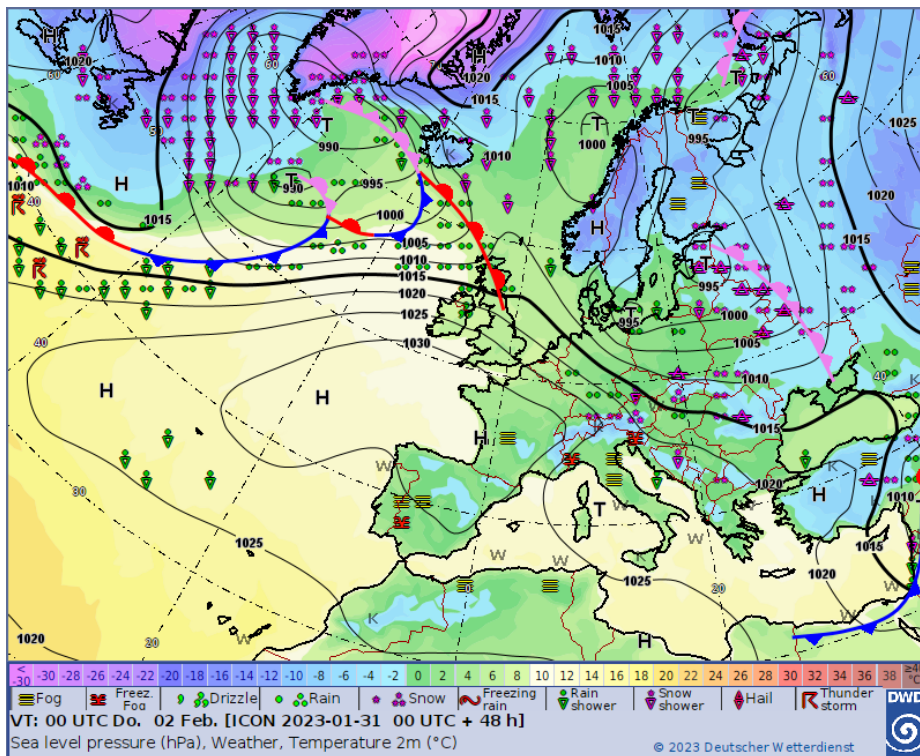


500-hPa chart, 31 January 2023, 00 UTC. Source: DWD

Tägliche Minimumtemperatur: 31. Januar 2023 (Europa)
Daily Minimum Temperature: 31 January 2023 (Europe)



Map of daily minimum temperature on 31 January 2023, Source: DWD



Forecast chart for 2 February 2023, 00 UTC, Source: DWD,

https://www.dwd.de/EN/ourservices/hobbymet_wcharts_europe/hobbyeuropecharts.html